

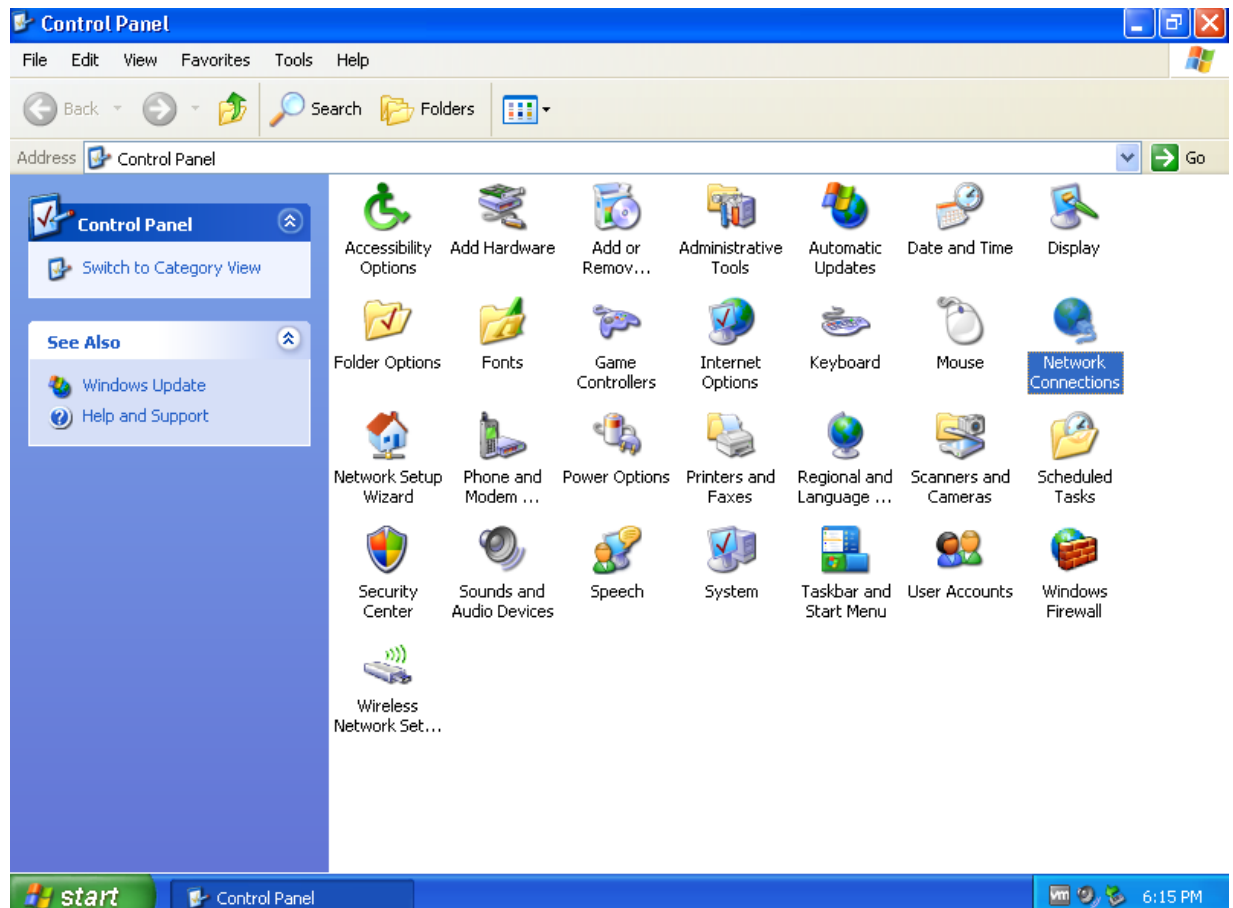
# Network Setting Note

## PC Network IP Setting

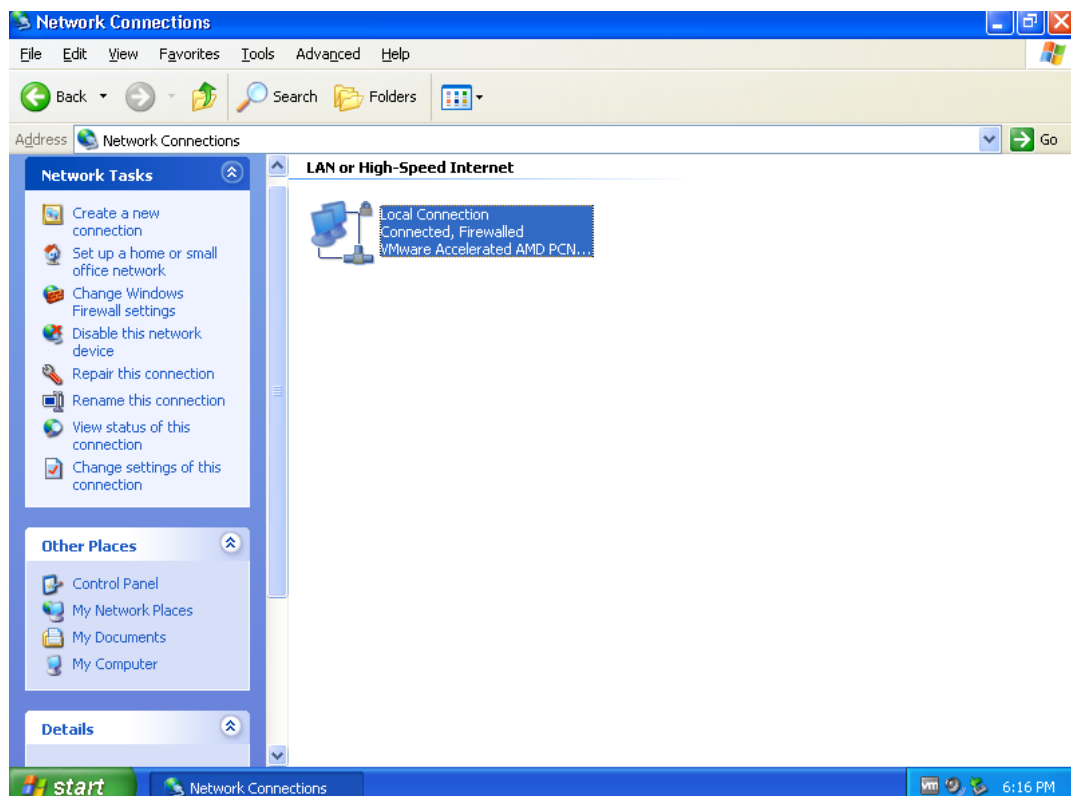
Enter the control panel



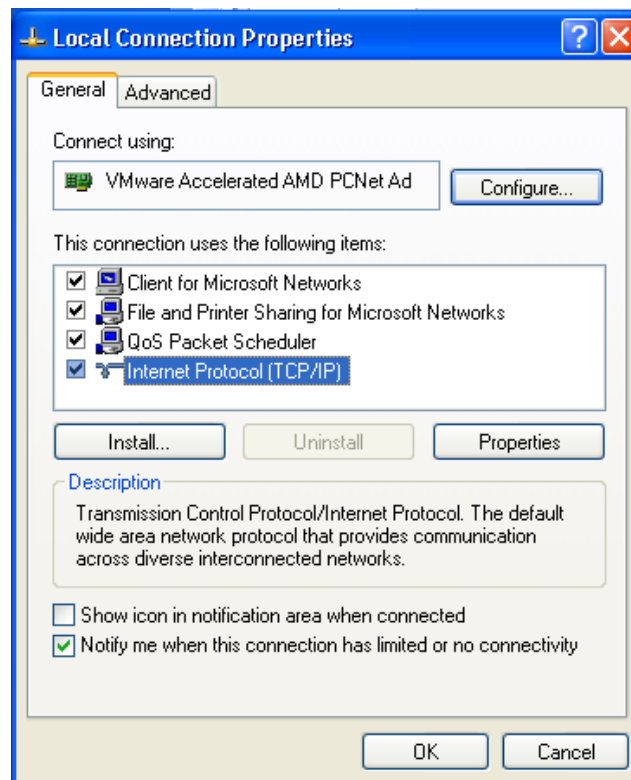
Double click network connection.



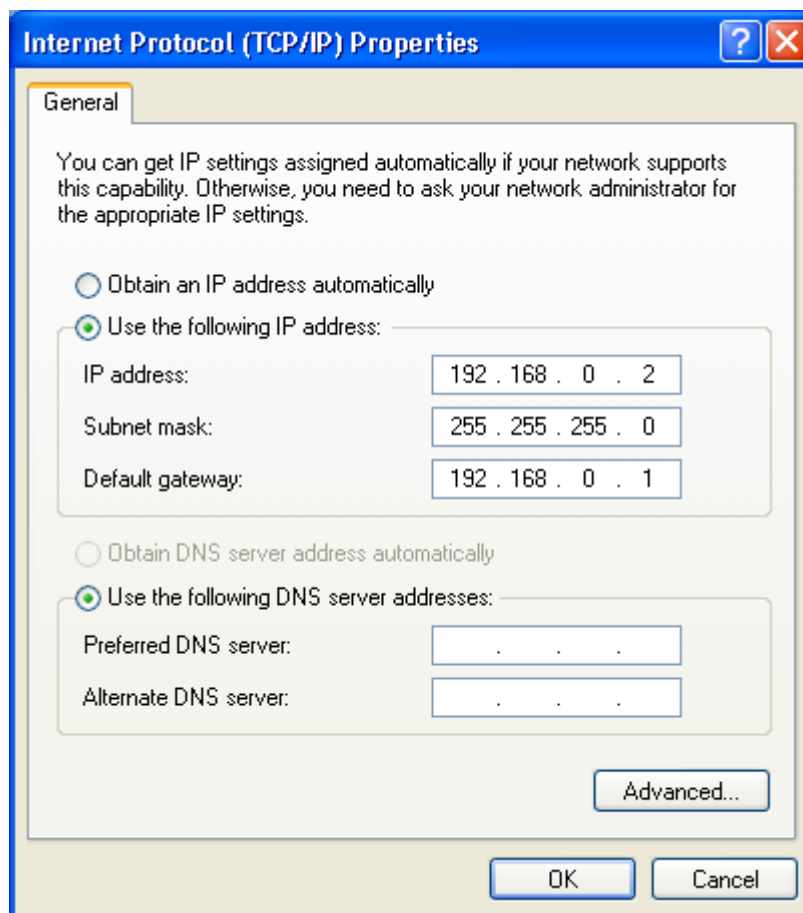
Double click "Local Connection".



Double click TCP/IP setting.

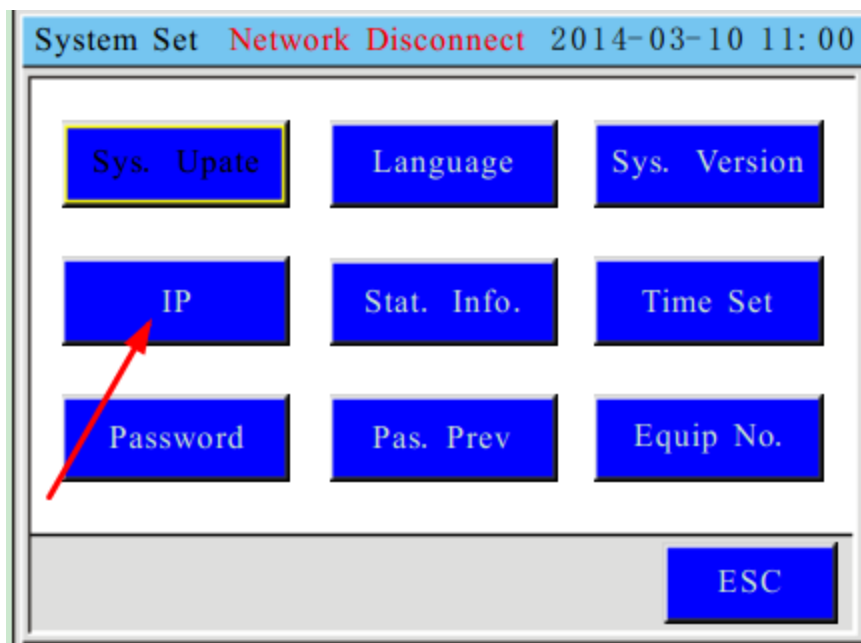
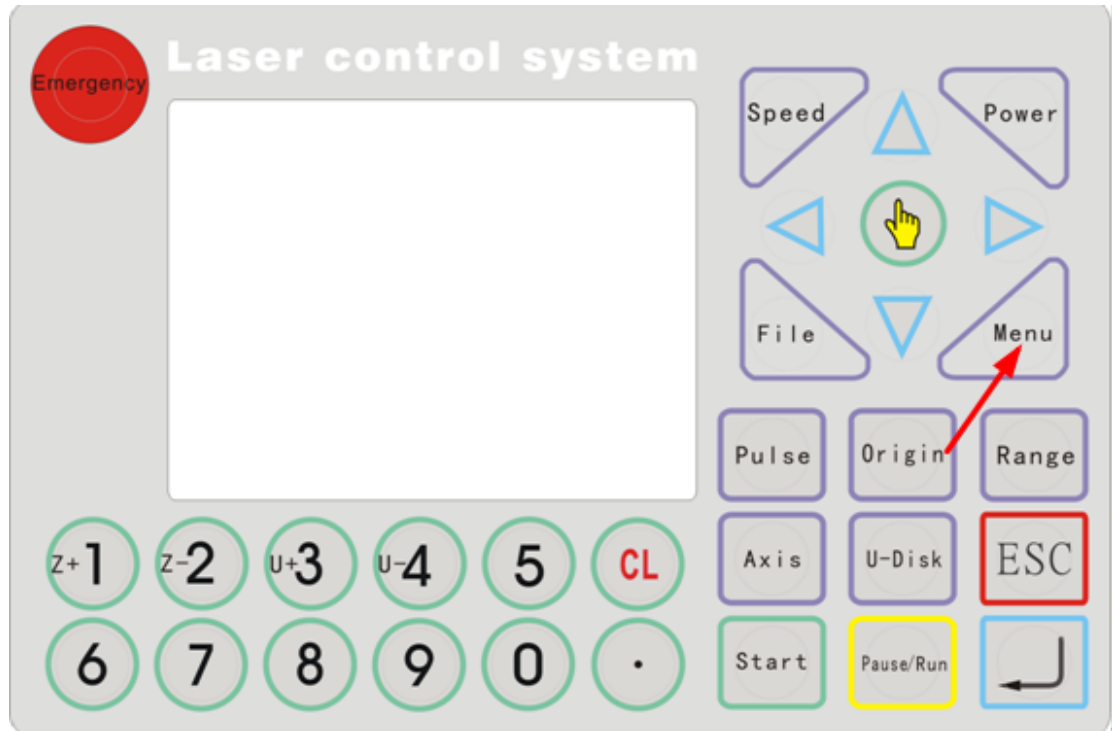


Select "Use the following IP address", set the IP, Subnet mask, Default gateway, as below figure.



## Machine IP Setting

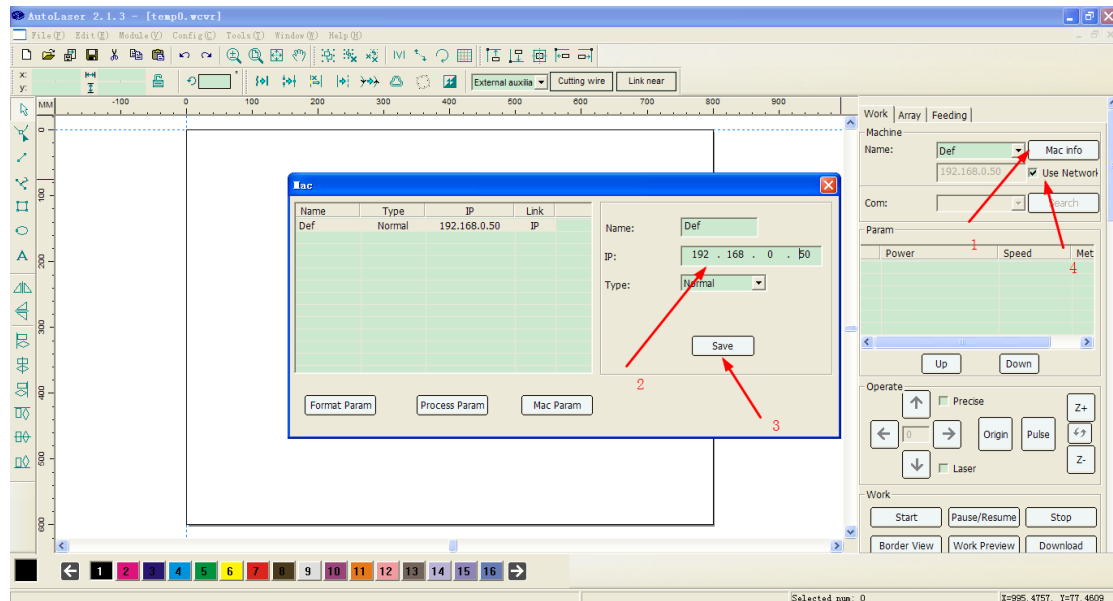
Press “**Menu**” button into Main Menu, then select Sys. Info, press “**Enter**” key to enter system set interface. Then select **IP** button to set the IP “**192.168.0.50**”.




# Set the AutoLaser or CorelDraw Plus-in Connection Way to Network.

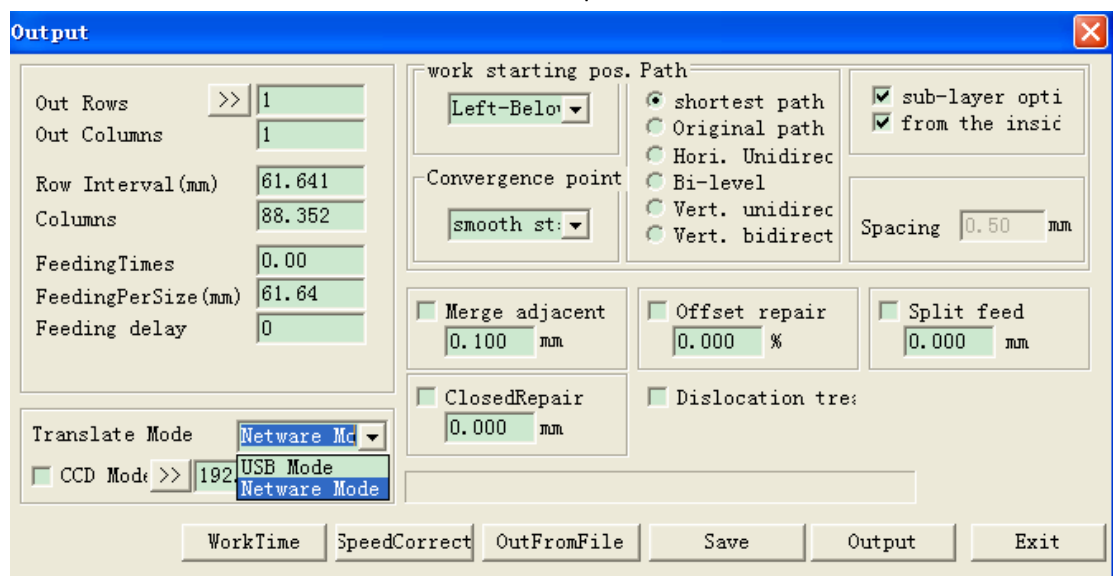
## AutoLaser:

Open AutoLaser, select **Mac Info** button, set the machine IP to **192.168.0.50** the same as previous section described. Click **Save** button. Click the **Use Network** check box to select network connection.



## CorelDraw plus-in:

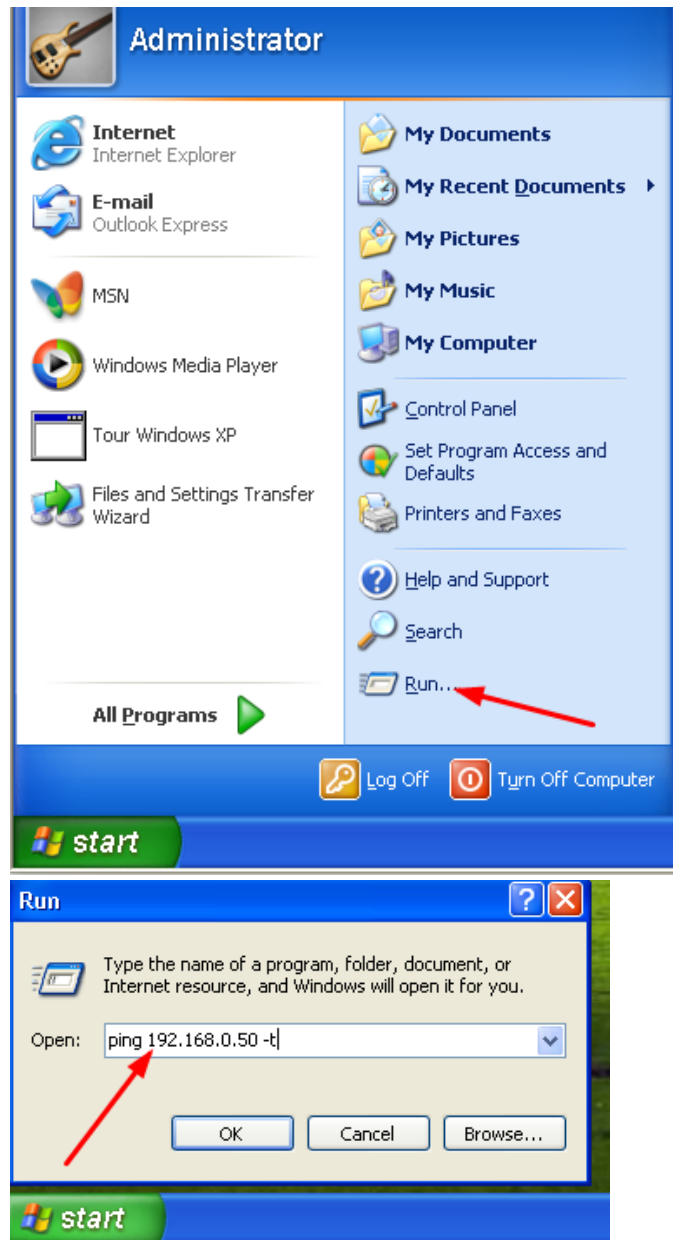
Open CorelDraw plus-in. Select Translate Mode to **Netware Mode**. Then Click the  Button to set the Machine IP to **192.168.0.50** the same as previous section described.

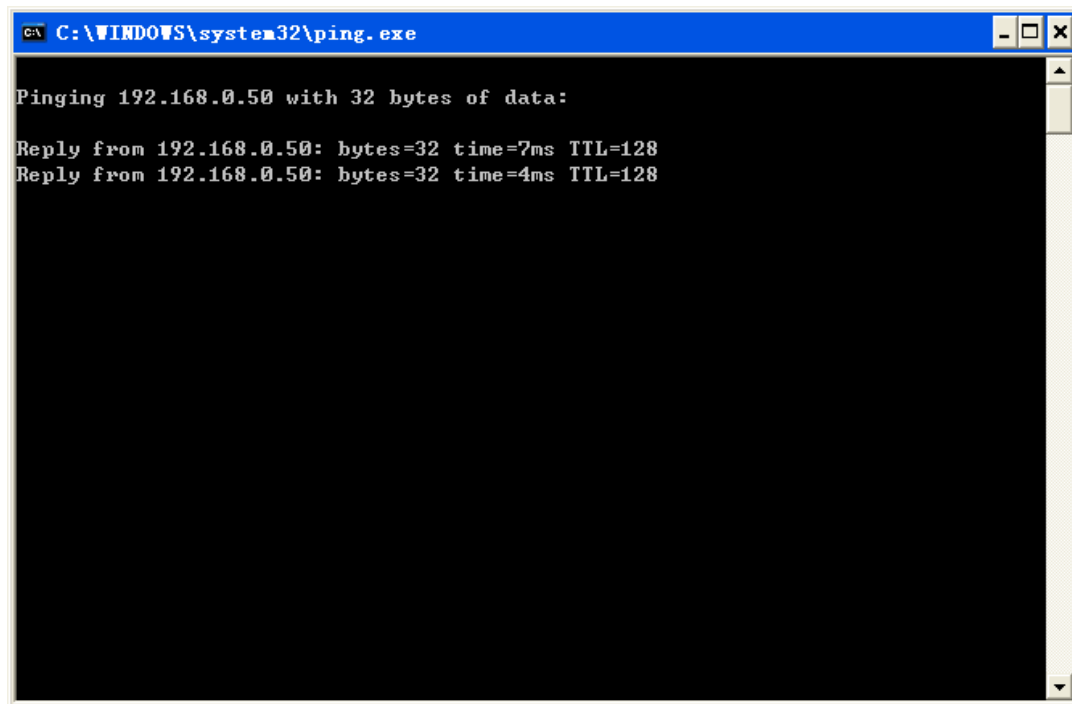


Now the network configuration is completed.

## Network Test

Connect the machine to the PC with Ethernet cable. Then Try the **PING** command for test.  
ping 192.168.0.50 -t





```
C:\WINDOWS\system32\ping.exe

Pinging 192.168.0.50 with 32 bytes of data:

Reply from 192.168.0.50: bytes=32 time=7ms TTL=128
Reply from 192.168.0.50: bytes=32 time=4ms TTL=128
```